

\$374,900 - 1511 S Robert St, Boise

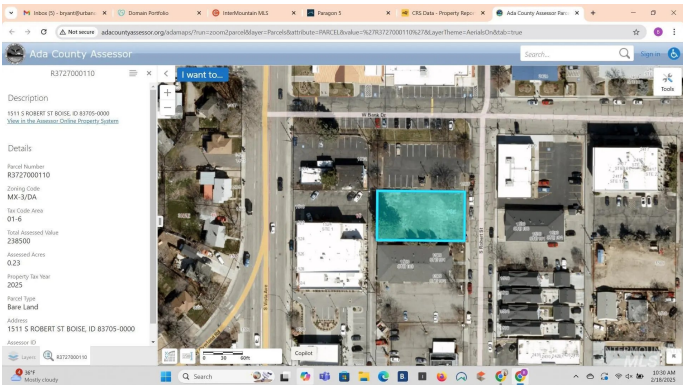
MLS® #98936320

\$374,900

Bedroom, Bathroom,
Land on 0.23 Acres

Hoppie Sub, Boise, ID

MX-3/DA New zoning adds additional options.
Build a successful project offering affordable homes. Walkable, Bikeable location close to shops, offices, cafes, grocers, University, public transportation. Build on level lot.
Contract with Seller for construction or build on your own.



Essential Information

MLS® #	98936320
Price Per Acre	\$1,630,000
Acres	0.23
Type	Land
Sub-Type	Unimproved Land
Status	Active

Community Information

Address	1511 S Robert St
Area	Boise Bench - 0400
Subdivision	Hoppie Sub
City	Boise
County	Ada
State	ID
Zip Code	83705-2529

Amenities

Utilities	Electricity Available, Natural Gas Connected, Electricity Connected, Sewer Connected
Golf Course	N

Exterior

Lot Description 10000 SF - .49 Acres, Level

Additional Information

Date Listed February 18th, 2025
Days on Market 221
Zoning MX-3/DA
Property Taxes \$2,174
Tax Year 2024
Office Keller Williams Realty Boise
Contact Info broker@kwboise.com

Listing Details

Listing Office Keller Williams Realty Boise



IDX information is provided exclusively for consumers' personal, non-commercial use, and may not be used for any purpose other than to identify prospective properties consumers may be interested in purchasing. IMLS does not assume any liability for missing or inaccurate data. Information provided by IMLS is deemed reliable but not guaranteed.

Listing information last updated on October 14th, 2025 at 7:18pm MDT