

\$433,990 - 7417 E Shields Dr, Nampa

MLS® #98936035

\$433,990

4 Bedroom, 2.00 Bathroom, 1,860 sqft
Residential on 0.20 Acres

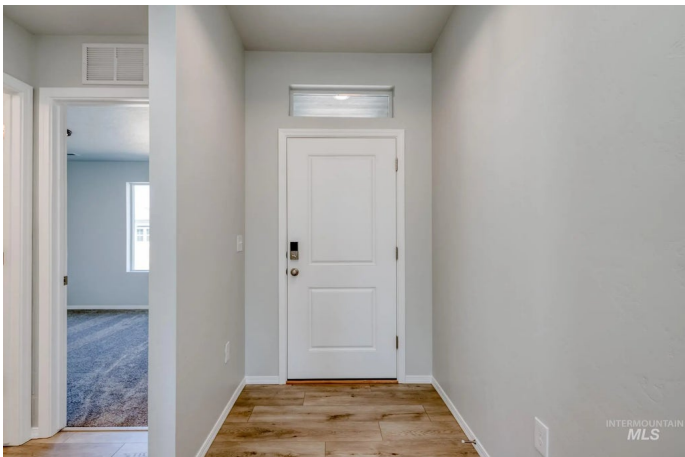
Spring Shores, Nampa, ID

Fall in Love with Low Rates! Promotional rate as low as 2.99%. Ask a Sales Specialist for details! Feel enriched in your brand new home located in Nampa, Idaho! The Willow 1860's single level space is smartly laid out, boasting two bedrooms situated at the front of the home. To entertain or for personal relaxation, escape into the spacious vaulted great room and dining room that open onto a back patio. Natural light cascades through the windows, adding an illuminated touch to the vaulted ceiling. Retreat to the primary suite for restful nights, complete with a roomy en suite bathroom, dual vanities, a stand-up shower, and a walk-in closet. Enjoy the luxury of the great room or warm nights under the stars – this one-of-a-kind home provides space for everyone! Potential RV parking available. Photos are of the actual home!

Built in 2024

Essential Information

MLS® #	98936035
Price Per SQFT	\$233
Bedrooms	4
Bathrooms	2.00
Square Footage	1,860
Acres	0.20
Year Built	2024
Type	Residential



Sub-Type	Single Family Residence
Status	Active

Community Information

Address	7417 E Shields Dr
Area	Nampa NE (87) - 1250
Subdivision	Spring Shores
City	Nampa
County	Canyon
State	ID
Zip Code	83687
Builder	CBH Homes

Amenities

Utilities	Sewer Connected
Parking Spaces	3
Parking	Attached
# of Garages	3
Golf Course	N
Virtual Tour	https://my.matterport.com/show/?m=S6mXGSyezjg&mls=1

Interior

Interior Features	Bath-Master, Bed-Master Main Level, Split Bedroom, Great Room, Double Vanity, Walk-In Closet(s), Breakfast Bar, Pantry, Kitchen Island
Appliances	Gas Water Heater, Dishwasher, Disposal, Microwave, Oven/Range Freestanding
Heating	Forced Air, Natural Gas
Cooling	Central Air
Stories	One
Primary On Main	Yes

Exterior

Lot Description	Standard Lot 6000-9999 SF, Irrigation Available, Sidewalks, Auto Sprinkler System, Partial Sprinkler System, Pressurized Irrigation Sprinkler System
Roof	Composition

School Information

District	Vallivue School District #139
Elementary	East Canyon

Middle	Sage Valley
High	Ridgevue

Additional Information

Date Listed	February 14th, 2025
Days on Market	221
HOA Fees	\$715
HOA Fees Freq.	Annually
New Construction	Yes
Tax Year	2024
Office	CBH Sales & Marketing Inc
Contact Info	tarak@cbhhomes.com

Listing Details

Listing Office	CBH Sales & Marketing Inc
----------------	---------------------------



IDX information is provided exclusively for consumers' personal, non-commercial use, and may not be used for any purpose other than to identify prospective properties consumers may be interested in purchasing. IMLS does not assume any liability for missing or inaccurate data. Information provided by IMLS is deemed reliable but not guaranteed.

Listing information last updated on October 11th, 2025 at 9:18pm MDT