

# \$995,000 - 500 East Victory Road, Meridian

MLS® #98934330

**\$995,000**

Bedroom, Bathroom,  
Land on 1.62 Acres

Observation Pt, Meridian, ID

Approximately 1.62 acres to be split from 300 East Victory Road. Property is currently zoned R-4. Victory Commons Complex contiguous to the west is zoned Meridian C-G. Also, excellent location for possible multi family rezone. Victory Road frontage with easy access to I-84. Exact size of parcel to be adjusted based on new survey ordered January 2025.

## Essential Information

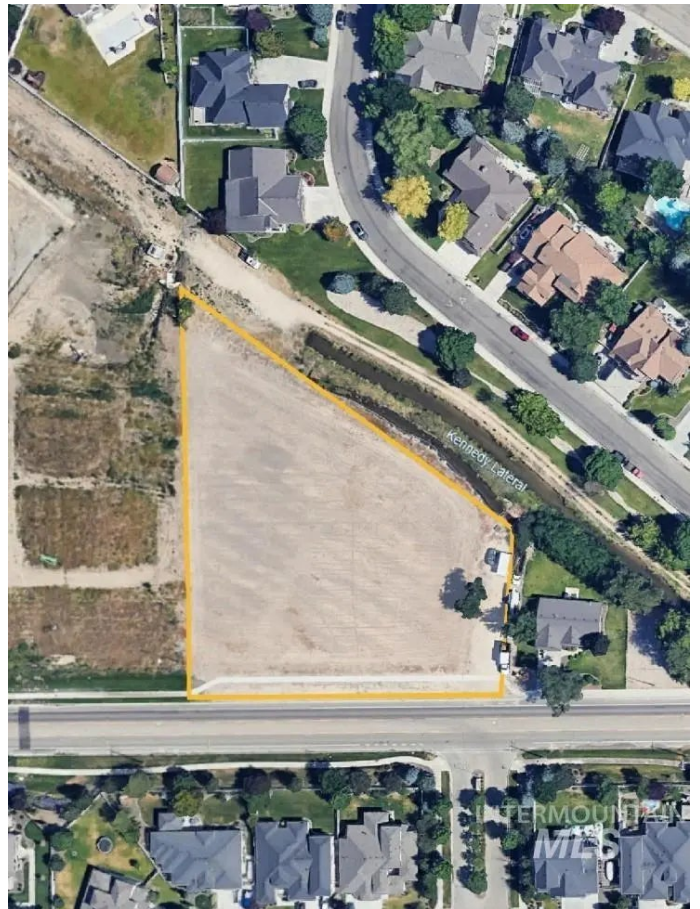
MLS® #	98934330
Price Per Acre	\$614,198
Acres	1.62
Type	Land
Sub-Type	Unimproved Land
Status	Active

## Community Information

Address	500 East Victory Road
Area	Meridian SE - 1000
Subdivision	Observation Pt
City	Meridian
County	Ada
State	ID
Zip Code	83642

## Amenities

Utilities	Electricity Available, Natural Gas Connected, Phone Connected, Cable Connected, Electricity Connected, Sewer Connected
-----------	--



Golf Course                N

**Exterior**

Lot Description        1 Acre - 4.99 Acres, Irrigation, Level

**Additional Information**

Date Listed            January 27th, 2025  
Days on Market       174  
Zoning                 R-4  
Tax Year               2024  
Office                  Coldwell Banker Tomlinson  
Contact Info          bvanallen@cbboise.com

**Listing Details**

Listing Office         Coldwell Banker Tomlinson



IDX information is provided exclusively for consumers' personal, non-commercial use, and may not be used for any purpose other than to identify prospective properties consumers may be interested in purchasing. IMLS does not assume any liability for missing or inaccurate data. Information provided by IMLS is deemed reliable but not guaranteed.

Listing information last updated on October 15th, 2025 at 11:03am MDT