

\$175,000 - 3828 W Spring House Ln, Eagle

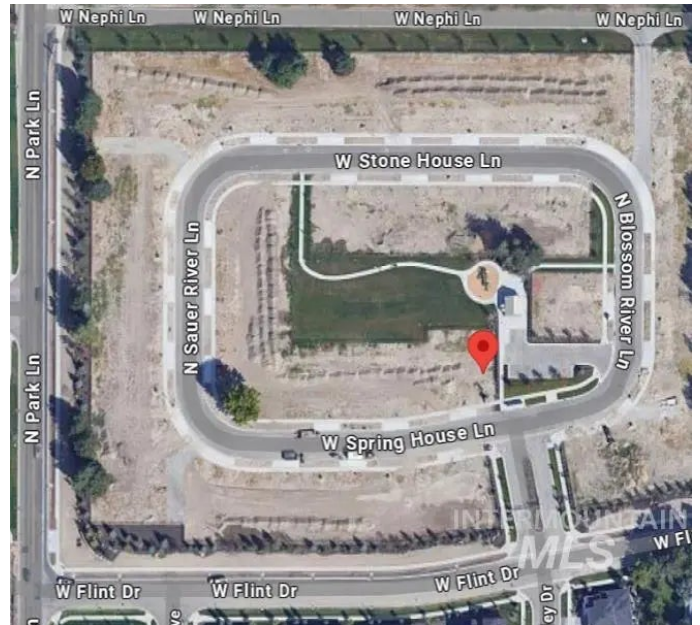
MLS® #98933765

\$175,000

Bedroom, Bathroom,
Land on 0.09 Acres

Bellemeade, Eagle, ID

Discover an incredible opportunity to build in this delightful, low-maintenance gated community! Bellemeade is perfect for those seeking a "lock-and-leave" lifestyle. Enjoy the privacy of a tucked-away street and the charm of a neighborhood featuring a gazebo and picnic area in the common space. Conveniently located close to everything you need, these ready-to-build lots are waiting for you. Donâ€™t miss outâ€”come see what makes this community so special!



Essential Information

MLS® #	98933765
Price Per Acre	\$1,944,444
Acres	0.09
Type	Land
Sub-Type	Unimproved Land
Status	Active

Community Information

Address	3828 W Spring House Ln
Area	Eagle - 0900
Subdivision	Bellemeade
City	Eagle
County	Ada
State	ID
Zip Code	83616-1020

Amenities

Utilities	Electricity Available, Natural Gas Connected, Phone Connected, Electricity Connected, Sewer Connected
Golf Course	N

Exterior

Lot Description	Sm Lot 5999 SqFt, Irrigation, Level
-----------------	-------------------------------------

School Information

District	West Ada School District
Elementary	Eagle
Middle	Eagle Middle
High	Eagle

Additional Information

Date Listed	January 21st, 2025
Days on Market	182
Zoning	Mu-Da
HOA Fees	\$160
HOA Fees Freq.	Monthly
Tax Year	2023
Office	Coldwell Banker Tomlinson
Contact Info	bvanallen@cbboise.com

Listing Details

Listing Office	Coldwell Banker Tomlinson
----------------	---------------------------



IDX information is provided exclusively for consumers' personal, non-commercial use, and may not be used for any purpose other than to identify prospective properties consumers may be interested in purchasing. IMLS does not assume any liability for missing or inaccurate data. Information provided by IMLS is deemed reliable but not guaranteed.

Listing information last updated on October 14th, 2025 at 6:33am MDT