

\$1,100,000 - 24959 Belgian Way, Middleton

MLS® #98933562

\$1,100,000

4 Bedroom, 4.00 Bathroom, 3,272 sqft

Residential on 1.23 Acres

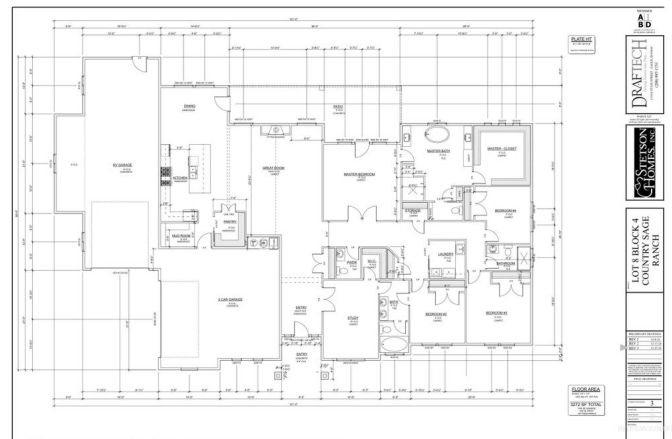
Country Sage Ranches, Middleton, ID

Award winning local builder, Stetson Homes presents "The Shenandoah", one of the first homes in Middleton's newest estate subdivision, Country Sage Ranches! Opportunities are endless with 1+ acre lots! Detached shops, ADUs, and select large animals allowed. Natural gas for efficiency and pressurized irrigation so there is no need to water off your well. This expansive single level home lives large with vaulted ceilings in the great room and open concept chef's kitchen. The massive primary suite has spa-like bathroom, individual vanities, stand alone bath tub and oversized walk-in closet. The secondary bedrooms are conveniently anchored by two separate full bathrooms. Huge 44' RV garage is perfectly positioned for straight pull in with complimenting oversized side load 2 car garage with extra storage space. Don't miss this gorgeous home! Additional build options available with Stetson Homes.

Built in 2025

Essential Information

MLS® #	98933562
Price Per SQFT	\$336
Bedrooms	4
Bathrooms	4.00
Square Footage	3,272
Acres	1.23



Year Built	2025
Type	Residential
Sub-Type	Single Family w/ Acreage
Status	Active

Community Information

Address	24959 Belgian Way
Area	Middleton - 1285
Subdivision	Country Sage Ranches
City	Middleton
County	Canyon
State	ID
Zip Code	83644
Builder	Stetson Homes

Amenities

Parking Spaces	4
Parking	Attached, RV Access/Parking, Finished Driveway
# of Garages	4
RV/Boat Parking	Yes
Golf Course	N

Interior

Interior Features	Bath-Master, Bed-Master Main Level, Den/Office, Great Room, Double Vanity, Central Vacuum Plumbed, Walk-In Closet(s), Breakfast Bar, Pantry, Kitchen Island, Solid Surface Counters
Appliances	Gas Water Heater, Dishwasher, Disposal, Microwave, Oven/Range Built-In, Gas Oven, Gas Range
Heating	Forced Air, Natural Gas
Cooling	Central Air
Fireplace	Yes
Fireplaces	One, Gas, Insert
Stories	One
Primary On Main	Yes

Exterior

Lot Description	1 - 4.99 AC, Irrigation Available, Corner Lot, Auto Sprinkler System, Full Sprinkler System, Pressurized Irrigation Sprinkler System, Irrigation Sprinkler System
Roof	Composition

Foundation Crawl Space

School Information

District Middleton School District #134
Elementary Middleton Heights
Middle Middleton Jr
High Middleton

Additional Information

Date Listed January 17th, 2025
Days on Market 174
HOA Fees \$800
HOA Fees Freq. Annually
New Construction Yes
Tax Year 2024
Office Silvercreek Realty Group
Contact Info broker@silvercreekrealty.com

Listing Details

Listing Office Silvercreek Realty Group



IDX information is provided exclusively for consumers' personal, non-commercial use, and may not be used for any purpose other than to identify prospective properties consumers may be interested in purchasing. IMLS does not assume any liability for missing or inaccurate data. Information provided by IMLS is deemed reliable but not guaranteed.

Listing information last updated on October 14th, 2025 at 9:03am MDT