

# \$389,900 - 960 Nautilus Way, Boise

MLS® #98929117

**\$389,900**

2 Bedroom, 2.00 Bathroom, 960 sqft

Residential on 0.05 Acres

Voyager, Boise, ID

**HUGE PRICE DROP!!** Welcome to the Voyager Cottages! Perfect for first-time buyers or those seeking a cozy retreat close to the city! Thoughtfully designed for comfort and convenience. Nestled in a prime location, you'll have quick access to shopping, dining, and entertainment, making everyday like a breeze. Don't miss this opportunity to own an inviting, move-in-ready space that feels like home from the moment you walk in! Also, great Airbnb investment opportunity!

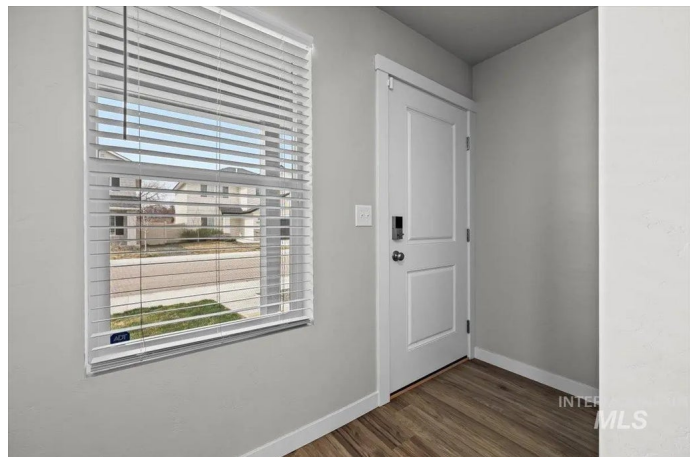
Built in 2021

## Essential Information

MLS® #	98929117
Price Per SQFT	\$406
Bedrooms	2
Bathrooms	2.00
Square Footage	960
Acres	0.05
Year Built	2021
Type	Residential
Sub-Type	Single Family Residence
Status	Active

## Community Information

Address	960 Nautilus Way
Area	Boise SW-Meridian - 0550
Subdivision	Voyager
City	Boise



County	Ada
State	ID
Zip Code	83709

### **Amenities**

Utilities	Sewer Connected
Parking Spaces	1
Parking	Attached
# of Garages	1
Golf Course	N

### **Interior**

Interior Features	Breakfast Bar
Appliances	Dishwasher, Disposal, Microwave, Oven/Range Freestanding
Heating	Forced Air, Natural Gas
Cooling	Central Air
Stories	Two

### **Exterior**

Lot Description	Sm Lot 5999 SF, Auto Sprinkler System
-----------------	---------------------------------------

### **School Information**

District	Boise School District #1
Elementary	Horizon Boise
Middle	West Boise Jr
High	Borah

### **Additional Information**

Date Listed	November 12th, 2024
Days on Market	264
HOA Fees	\$460
HOA Fees Freq.	Annually
Property Taxes	\$1,550
Tax Year	2024
Office	Silvercreek Realty Group
Contact Info	broker@silvercreekrealty.com

### **Listing Details**

Listing Office	Silvercreek Realty Group
----------------	--------------------------

IDX information is provided exclusively for consumers' personal, non-commercial use, and may not be used for any purpose other than to identify prospective properties consumers may be interested in purchasing. IMLS does not assume any liability for missing or inaccurate data. Information provided by IMLS is deemed reliable but not guaranteed.

Listing information last updated on October 15th, 2025 at 6:48am MDT