

\$660,000 - 3427 N Hardwick Ave., Eagle

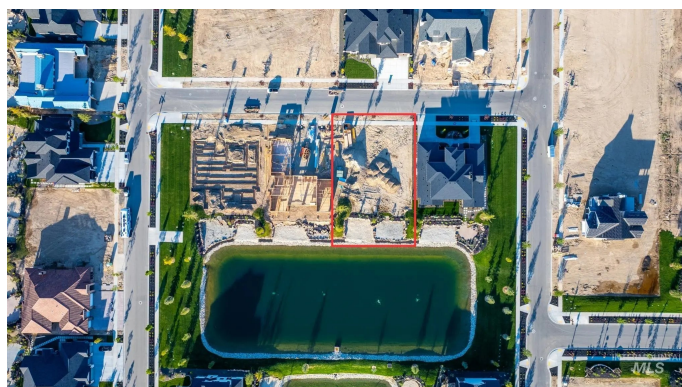
MLS® #98926061

\$660,000

Bedroom, Bathroom,
Land on 0.32 Acres

Terra View, Eagle, ID

Unrivalled resort-style living awaits at Eagle's premier luxury waterfront community—Terra View. Award-winning builder Sherburne-Marrs has secured premium homesites in this exclusive destination, offering the opportunity to design your fully custom dream home. Lot 8 boasts sweeping views across two tranquil ponds, ensuring forever vistas and unforgettable sunsets from your private sandy beach. Gather with friends and neighbors at the newly built, fully furnished clubhouse and resort-style pool, or enjoy Terra View's abundant amenities, including parks, splash pads, and pavilions. Perfectly positioned near the new Hwy 16 freeway extension, Terra View offers unmatched access to the entire Treasure Valley. Golf courses, wineries, and boutique shopping are less than five minutes away, blending convenience with luxury living. Partner with the Sherburne-Marrs team to create a home tailored to your vision, lifestyle, and budget. At Terra View, every day feels like a vacation.



Essential Information

MLS® #	98926061
Price Per Acre	\$2,062,500
Acres	0.32
Type	Land
Sub-Type	Build to Suit Residential

Status Active

Community Information

Address 3427 N Hardwick Ave.
Area Eagle - 0900
Subdivision Terra View
City Eagle
County Ada
State ID
Zip Code 83616

Amenities

Utilities Electricity Available, Natural Gas Connected, Electricity Connected, Sewer Connected, Underground Utilities
Waterfront Pond/Stream/Creek, Waterfront
View Yes
Golf Course N

Exterior

Lot Description 10000 SF - .49 Acres, Level, Views

School Information

District West Ada School District
Elementary Star
Middle Star
High Eagle

Additional Information

Date Listed October 7th, 2024
Days on Market 359
HOA Fees \$2,800
HOA Fees Freq. Annually
Tax Year 2023
Office The Agency Boise
Contact Info opheliehomes@gmail.com

Listing Details

Listing Office The Agency Boise



IDX information is provided exclusively for consumers' personal, non-commercial use, and may not be

used for any purpose other than to identify prospective properties consumers may be interested in purchasing. IMLS does not assume any liability for missing or inaccurate data. Information provided by IMLS is deemed reliable but not guaranteed.

Listing information last updated on October 14th, 2025 at 9:03pm MDT