

# \$779,900 - 2673 E Mesa Verde Court, Boise

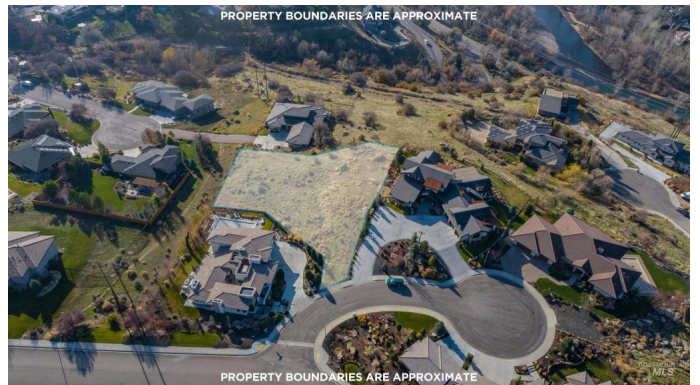
MLS® #98920577

**\$779,900**

Bedroom, Bathroom,  
Land on 0.66 Acres

Boulder Heights, Boise, ID

Prepare to be moved! Truly one-of-a-kind custom building opportunity in the Boise foothills! Sitting on 0.66 acres, this extremely rare elevated view lot sits on a cul-de-sac and overlooks the Boise River, Downtown Boise, and a wide swathe of the Treasure Valley. Enjoy stately luxury with unbelievable access to foothills hiking trails, Table Rock, Warm Springs Golf Course, Boise Greenbelt, and a short drive into the Boise city center. This is the last lot in this separate subdivision with no HOA or setup/transfer fees. Bring your builder and design your dream estate home! BTVAI



## Essential Information

MLS® #	98920577
Price Per Acre	\$1,181,667
Acres	0.66
Type	Land
Sub-Type	Build to Suit Residential
Status	Active

## Community Information

Address	2673 E Mesa Verde Court
Area	Boise NE - 0200
Subdivision	Boulder Heights
City	Boise
County	Ada
State	ID
Zip Code	83712-5005

## Amenities

Utilities	Electricity Available, Natural Gas Not Available, Phone Connected, Cable Connected, Electricity Connected
View	Yes
Golf Course	N

## Exterior

Lot Description	1/2 Acre - .99 Acres, Views
-----------------	-----------------------------

## Additional Information

Date Listed	August 14th, 2024
Days on Market	407
HOA Fees Freq.	Annually
Property Taxes	\$5,956
Tax Year	2023
Office	Homes of Idaho
Contact Info	info@homesofidaho.com

## Listing Details

Listing Office	Homes of Idaho
----------------	----------------



IDX information is provided exclusively for consumers' personal, non-commercial use, and may not be used for any purpose other than to identify prospective properties consumers may be interested in purchasing. IMLS does not assume any liability for missing or inaccurate data. Information provided by IMLS is deemed reliable but not guaranteed.

Listing information last updated on October 14th, 2025 at 12:33pm MDT